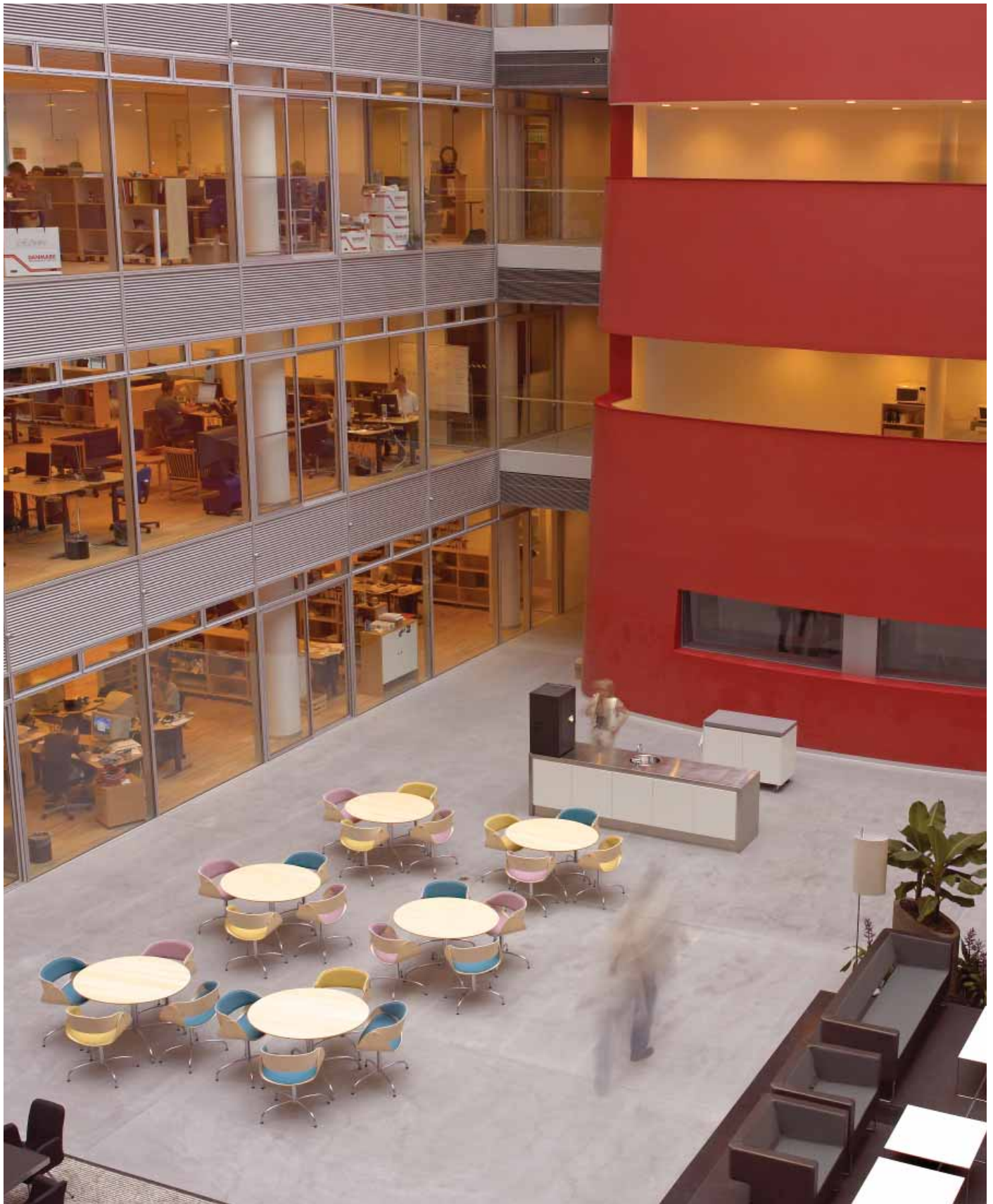
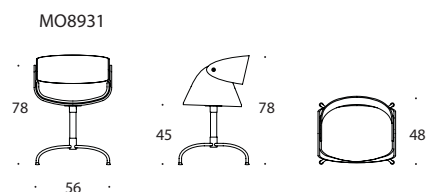


# U•Turn

design: Olesen & Kristiansen





U•turn er fremtidens stol. Bestående af få elementer og skabt til offentlige rum, foyer eller konferencemiljøer, opfylder stolen såvel æstetiske som funktionelle krav.

Stolens grundlæggende idé er at skabe et sidderum af to U-formede ellipser, samlet i yderpunkterne og båret af et drejeligt understel.

U-formerne er i lamineret træ og danner tilsammen siddeflade, arm- og rygstøtte. Det drejelige understel med retursving i blank- eller matforkromet stål gentager U-formerne og fuldender stolens dynamiske design.

En let, komfortabel polstring i læder eller stof understreger stolens udtryk. Det let fjedrende rygstykke leveres enten fuldpolstret eller med polstret forside.

U•turn produceres i ahorn, eg, bøg, kirsebær med klar polyurethanlak eller sortlakeret med soft touch effekt.

U•turn is a chair for the future. Consisting of few elements and created for public spaces, foyers or conference environments, the chair fulfils aesthetical as well as functional demands.

The concept of the chair is to create a sitting space, made of two U-shaped ellipses, joined together in the ends and carried by a revolving base.

The U-shapes are made of laminated wood and together they form the sitting surface, arms and back. The self-centering base in burnished or mat chrome-plated steel repeats the U-shapes and makes the dynamic design of the chair complete.

Light, comfortable upholstery in leather or fabric underlines the expression of the chair. The slightly resilient back piece is available in a full or partial upholstery.

U•turn is manufactured in maple, oak, beech, cherry with transparent lacquer or painted black with soft touch effect.



# +table

design: Olesen & Kristiansen

